

Be sure to read the following backlight replacement warnings before replacing your QuickPanel's backlight.

This replacement backlight package is intended for:

<i>QuickPanel Model Name</i>	<i>Backlight Model</i>
QPLCxxE0000	HMI-CCT-405

If this backlight is not appropriate for your QuickPanel or does not function correctly, please contact your local authorized QuickPanel representative.

Warning

- Be sure the QuickPanel's power cord has been disconnected before changing the backlight. When the QuickPanel's power cord is connected and the QuickPanel is ON, high voltage runs through the wires in the backlight area – do not touch them!
- When the QuickPanel 's power cord has just been disconnected, the backlight area is still very hot! Be sure to wear gloves to prevent being burned.
- The backlight is very fragile. Do not touch the glass tube directly or try to remove its power cord. If the glass tube breaks you may be injured.

Caution

- Change the entire backlight unit, including both the tube and holder.
- Do not allow water, oil or fingerprints to remain on the tube, since they can reduce the backlight's life.

Package contents

One replacement backlight (model HMI-CCT-405)

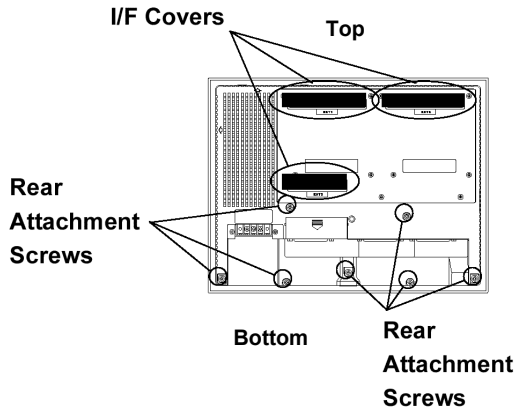
Four attachment screws (to be used if the original screws are lost)

Items required when changing the QuickPanel's backlight

- Phillips screwdriver (no. 2) for QuickPanel's rear cover attachment screws
- Phillips screwdriver (no. 0) for backlight unit's metal cover
- One pair of clean (preferably new) cotton gloves

GFK-2283

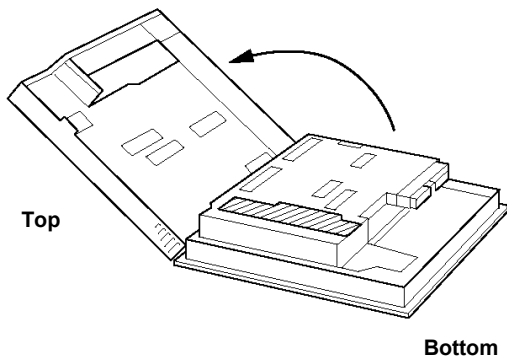
Backlight Replacement



1. Turn OFF the QuickPanel's power supply (disconnect the QuickPanel's power cord). Remove the three I/F covers and use a Philips screwdriver to remove the case's seven rear attachment screws.

Caution

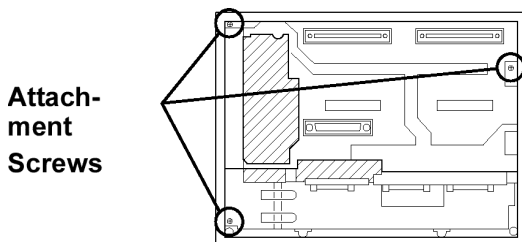
Because the attachment screws are small, be sure not to lose them or allow them to fall inside the QuickPanel's case.



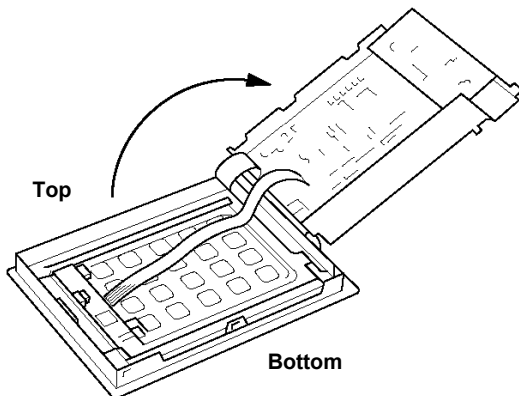
2. Pivot the rear cover open, starting from the bottom of the unit. The cover is fastened at the top and hinges open.

Caution

Be sure not to break the rear cover's four alignment tabs when you open it.



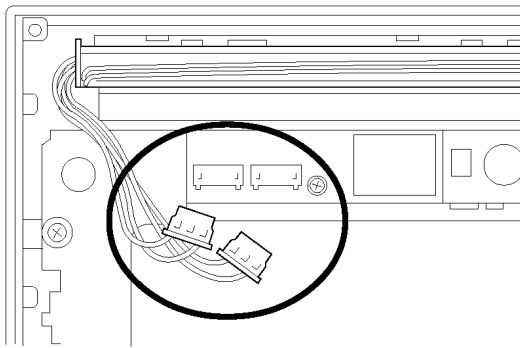
3. Loosen the three circuit board attachment screws.



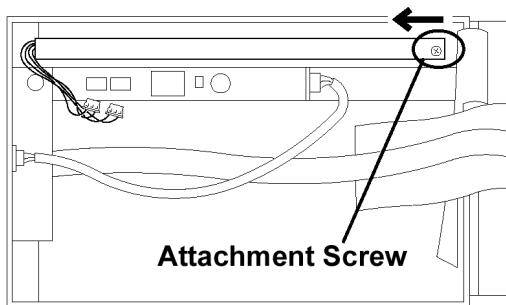
4. Pivot the circuit board away from the chassis. The circuit board is attached on the right side and hinges open.

Caution

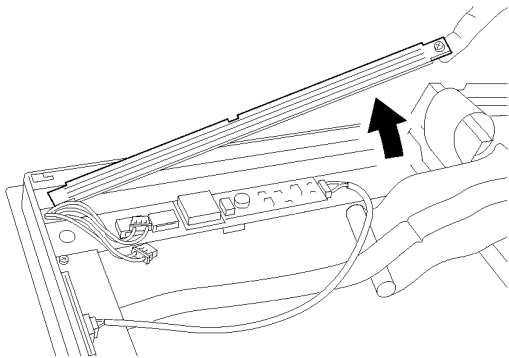
When the QuickPanel's power has just been turned OFF, the circuit board chassis is still very hot! To prevent being burned, wear gloves, or allow the chassis to cool completely.



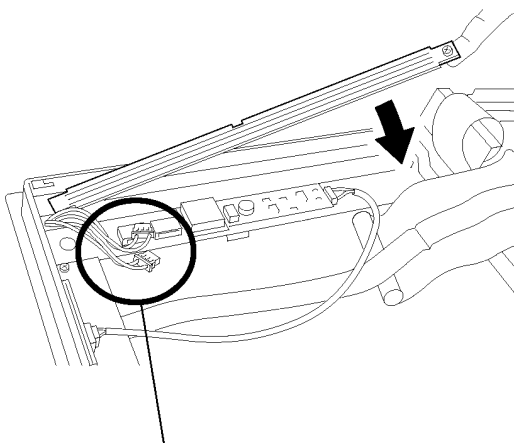
5. Disconnect the backlight's two power connectors.



6. Loosen the backlight unit attachment screw (the screw cannot be separated from the backlight unit), slide the backlight in the direction shown until the locking tab is disengaged. Remove the backlight holder by lifting up the right side of the holder, then lifting it completely out of the chassis.



7. Insert the new backlight unit in the QuickPanel by placing the left side of the backlight holder into the backlight channel. Carefully lower the right side of the holder until the backlight unit is fully inserted into the channel. Slide the unit to the right until the locking tab engages, then tighten the unit's attachment screw.



Power Connectors

8. Connect the backlight's two power connectors. Next, carefully fold the internal wiring while closing the circuit board and secure the rear case in place using the attachment screws removed in steps 1 through 3.

Caution

- **Be sure not to pinch or cut any of the QuickPanel unit's internal wiring when closing the case.**
- **If any of the attachment screws becomes misplaced, check to be sure that they have not fallen inside the QuickPanel. If a screw has fallen inside the QuickPanel, do not connect the unit's power cord until it has been removed.**

After changing the backlight, be sure to check that your QuickPanel display operates correctly. If a problem occurs, contact your local QuickPanel distributor.