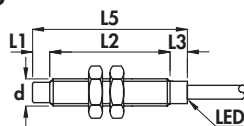
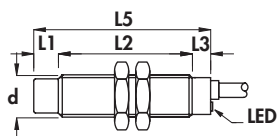


**Voltage 10 ÷ 50 V<sub>~</sub>** •  
**Amplified in d.c. + a.c. 2 wires** •  
**Cable output** •

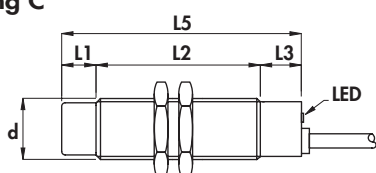
**Housing B-6**



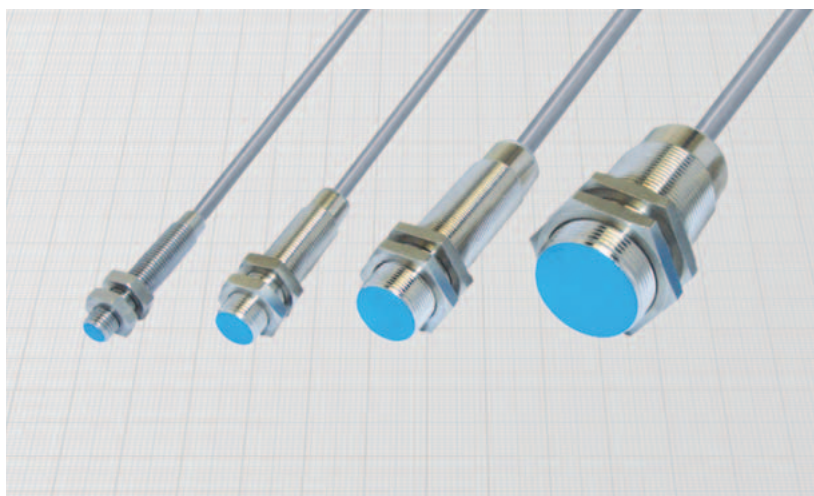
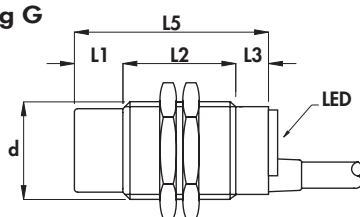
**Housing B-3**



**Housing C**



**Housing G**



Diameter		M8 x 1	M12 x 1	M18 x 1	M30 x 1,5
Nut	Size	SW13	SW17	SW24	SW36
	Thickness mm	4	4	4	5
Max tightening torque Nm		10	15	35	80

**Materials:**

- Cable: 2 m PVC CEI 20 - 22 II; 90°C; 300 V; O.R.
- Housing 8 mm: stainless steel
- Housing 12 - 18 - 30 mm: nickel plated brass
- Sensing face: plastic

**General Features:**

These sensors are able to work with either direct or alternate current. Voltage drop and residual current are very low. They are not polarized and the load can be connected on both the leads. In many applications they can be used to replace mechanical microswitches.

**Technical data:**

- Supply voltage (U<sub>B</sub>): 10 ÷ 50 Vdc/Vac
- Electrical system frequency: 40 ÷ 60 Hz
- Off-state current (I<sub>o</sub>): ≤ 1 mA
- Minimum operational current (I<sub>m</sub>): 5 mA
- Voltage drop (U<sub>d</sub>): ≤ 5 V
- Temperature range: -25° ÷ +70°C
- Max thermal drift of sensing distance S<sub>p</sub>: ± 10%
- Repeat accuracy (R): 2%
- Switching hysteresis (H): 10%
- Degree of protection: IP67
- Switch status indicator: yellow LED
- Cable conductor cross section: 0,35 mm<sup>2</sup> on 8 and 12 mm  
0,50 mm<sup>2</sup> on 18 mm  
0,75 mm<sup>2</sup> on 30 mm
- Protected against short-circuit and overload (versions with letter K)
- Suppression of initial false impulse
- Electromagnetic compatibility (EMC) according to EN60947-5-2
- Shock and vibration resistance according to EN60068-2-27 EN60068-2-6

Housing	Flush mounting Non flush mounting	L1	L2	L3	L4	L5	Cable diameter	Body diameter (d)	Max switching frequency (f) in d.c.	Max switching frequency (f) in a.c.	Rated operational current (I <sub>e</sub> )	Nominal sensing distance (S <sub>n</sub> ) ± 10%	ORDERING REFERENCES		
													mm	mm	mm
B-6	•	-	40	5	-	45	4	M8 x 1	1000	25	100	1,5		<b>AXM8/4600S</b>	<b>AXM8/4610S</b>
B-6	•	5	35	5	-	45	4	M8 x 1	800	25	100	2,5		<b>AXM8/5600S</b>	<b>AXM8/5610S</b>
B-3	•	-	43	7	-	50	4	M12 x 1	800	25	100	2		<b>AXM12/4600KS</b>	<b>AXM12/4610KS</b>
B-3	•	7	36	7	-	50	4	M12 x 1	600	25	100	4		<b>AXM12/5600KS</b>	<b>AXM12/5610KS</b>
C	•	-	58	12	-	70	5	M18 x 1	800	25	200	5		<b>AXM18/4600KS</b>	<b>AXM18/4610KS</b>
C	•	10	48	12	-	70	5	M18 x 1	400	25	200	8		<b>AXM18/5600KS</b>	<b>AXM18/5610KS</b>
G	•	-	50	10	-	60	6	M30 x 1,5	400	25	200	10		<b>AXM30/4600KS</b>	<b>AXM30/4610KS</b>
G	•	15	35	10	-	60	6	M30 x 1,5	200	25	200	15		<b>AXM30/5600KS</b>	<b>AXM30/5610KS</b>