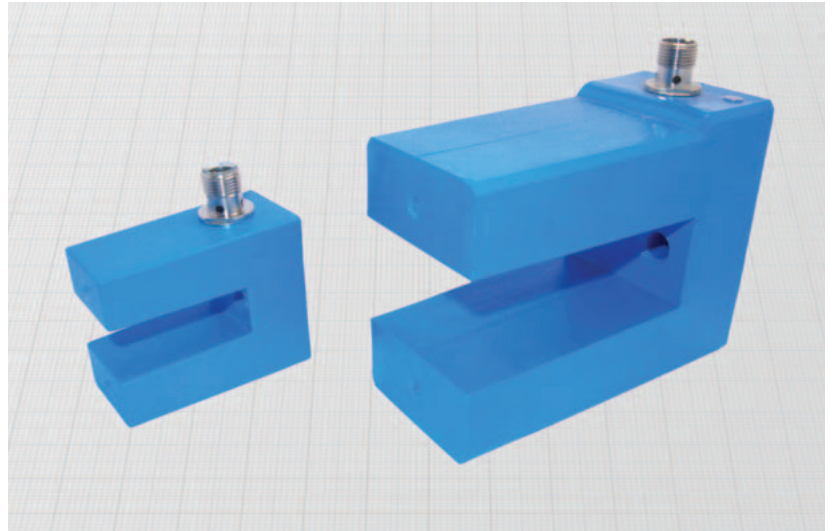
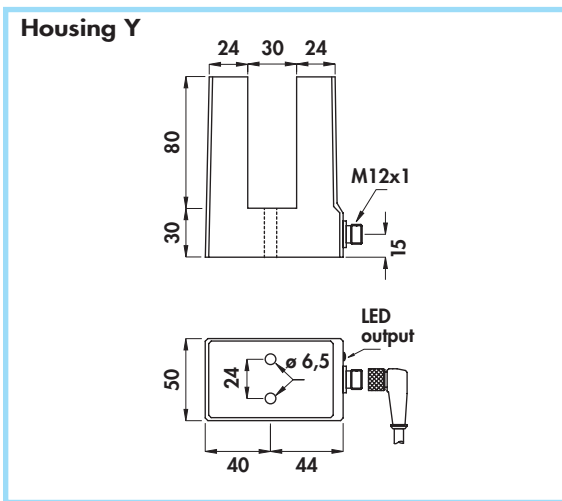
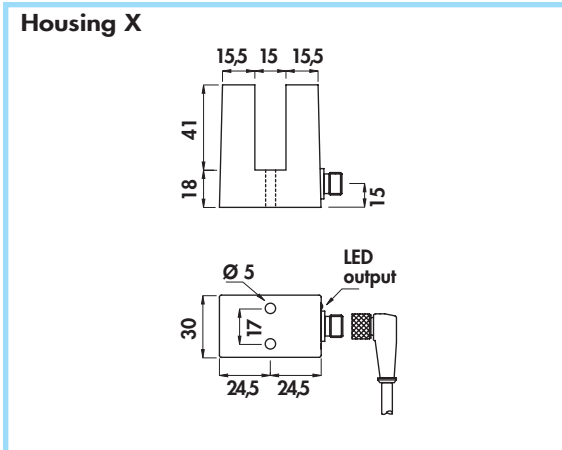


Amplified in d.c. •
Connector output M12 x 1 •



Materials:

- Housing: plastic
- Connector: nickel plated brass

Technical data:

- Supply voltage (U_B): 10 ÷ 60 Vdc
- Max ripple: 10%
- No-load supply current (I_0): ≤ 10 mA
- Voltage drop (U_d): ≤ 2,2 V
- Temperature range: -25° ÷ +70°C
- Max thermal drift of sensing distance S_T : ± 10%
- Repeat accuracy (R): 2%
- Switching hysteresis (H): 10%
- Degree of protection con connettori costampati: IP67
- Switch status indicator: yellow LED
- Protected against short-circuit and overload
- Protected against any wrong connection
- Suppression of initial false impulse
- Electromagnetic compatibility (EMC) according to EN60947-5-2
- Shock and vibration resistance according to EN60068-2-27 EN60068-2-6

Housing	Female connector	Gap width	Rated operational current (I_0)	Max switching frequency (f)	Minimum penetration	ORDERING REFERENCES		
						PNP (positive switching)		
n°	mm	mA	KHz	mm	NO	NC	NO + NC	
X	6-8B-10	15	400	0,5	16			
						DCF15/4309KS	DCF15/43C9KS	DCF15/4329KS
Y	6-8B-10	30	400	0,2	30			
						DCF30/4309KS	DCF30/43C9KS	DCF30/4329KS
						NPN (negative switching)		
						Use the above mentioned part number changing the last number 9 with 8 (ie. DCF15/4308KS)		