



Documents on CD1	Documents on CD2	Documents on CD3
<p><b>PACSystems™</b></p> <ul style="list-style-type: none"><li>&gt; RX7i</li><li>&gt; RX3i</li></ul> <p><b>Series 90™</b></p> <ul style="list-style-type: none"><li>&gt; Series 90-70</li><li>&gt; Series 90-30</li></ul>	<p><b>VersaMax®</b></p> <ul style="list-style-type: none"><li>&gt; VersaMax Controllers and I/O</li><li>&gt; VersaMax Micro &amp; Nano PLCs</li></ul> <p><b>I/O Products</b></p> <ul style="list-style-type: none"><li>&gt; VersaPoint™ I/O</li><li>&gt; Genius® I/O and GMR</li><li>&gt; Field Control™ I/O</li><li>&gt; More I/O Products</li></ul> <p><b>Motion Solutions</b></p> <ul style="list-style-type: none"><li>&gt; Power Mate, Motion Mate™, Servos, Encoders &amp; more</li></ul> <p><b>Operator Interface Products &amp; Industrial Computers</b></p> <ul style="list-style-type: none"><li>&gt; DataPanel™ &amp; Data Designer</li><li>&gt; QuickPanel™ &amp; Quick Designer</li><li>&gt; Quick Panel Control &amp; Quick Panel view</li><li>&gt; Display Station™</li><li>&gt; Control Station &amp; View Station</li><li>&gt; Operator Control Station™</li><li>&gt; More Operator Interfaces &amp; Industrial Computers</li></ul>	<p><b>PLC Programming</b></p> <ul style="list-style-type: none"><li>&gt; Machine Edition</li><li>&gt; VersaPro™</li><li>&gt; More PLC Programming</li></ul> <p><b>More PLCs</b></p> <ul style="list-style-type: none"><li>&gt; Series 90 Micro</li><li>&gt; Series Six</li><li>&gt; Series 90-20</li><li>&gt; Series One</li><li>&gt; IC620 Micro</li></ul>
<p><b>Translations on All CDs</b></p> <ul style="list-style-type: none"><li>&gt; Češti </li><li>&gt; Deutsch </li><li>&gt; Español </li><li>&gt; Français </li><li>&gt; Italian </li><li>&gt; Polski </li><li>&gt; Русский </li></ul>		

## InfoLink for PLC Document Library

The documents included here are the most recent versions available when *InfoLink for PLC* was released. Updates may be found at our website: <http://www.gefanuc.com/support>



## Need Help?

If you need technical assistance, contact the GE Fanuc Automation, Inc. Support Hotline:

Phone: 1-800-GEFANUC (1-800-433-2682)

Internet: <http://www.gefanuc.com/support>

Email: [support@gefanuc.com](mailto:support@gefanuc.com)

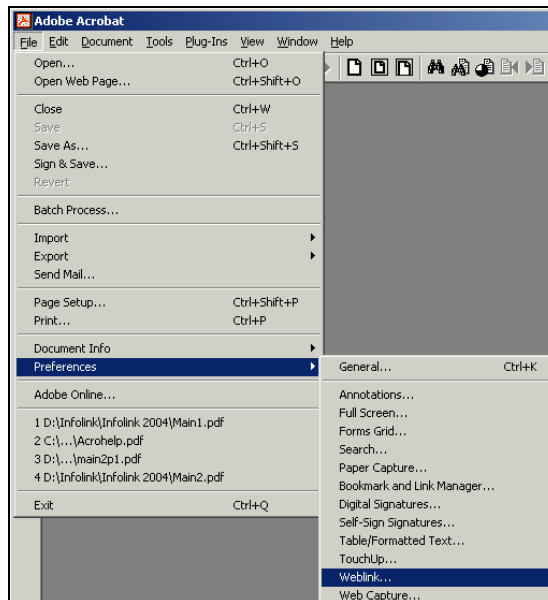
In Europe, contact the GE Fanuc Automation Europe Support Hotline:

Internet: <http://www.gefanuc-europe.com/>

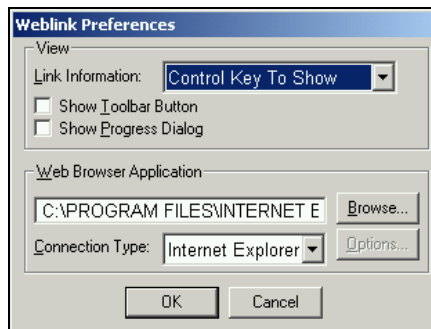
Email: [mailto:plc\\_europe@gefanuceur.ge.com](mailto:mailto:plc_europe@gefanuceur.ge.com)

If you click on one of these weblinks but it doesn't work, you may need to set up Adobe Acrobat to use your web browser application.

In Adobe Acrobat, choose File > Preferences > Weblink:



Select or navigate to the browser you want to use. For example:



Click OK.

## ***Installing InfoLink for PLC on a Hard Drive***

*InfoLink for PLC* can be run from the CDs or installed on a hard drive. Check the sizes of the files on *InfoLink for PLC* CDs to be sure the hard drive has enough space available.

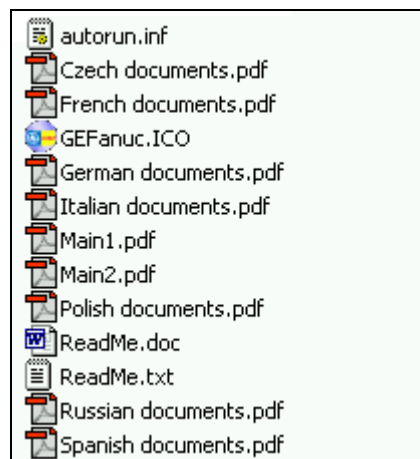
Create a new folder on the hard drive and copy the contents of the CDs into the new folder. It can have any name you choose. For example: *Infolink*.

If an earlier release of *Infolink for PLC* is already installed on the hard drive, it can be deleted. These CDs contain the most up-to-date versions of all manuals and datasheets, and all available revisions of the product update documents.

Copy the contents of CDs into the new folder exactly as they are.

***Do not change the directory names or directory structure,  
or the links and indexes won't work.***

Each *Infolink* CD contains copies of the same files in its root directory. For example:



When you install the second and third CDs, the duplicate files should write over the files from the first CD. (Other releases of *Infolink* may have some files in their root directories that are not shown the example above.)

After copying the files to the hard drive, you can create a shortcut to this file, *Main2.pdf*, and paste it onto your desktop. *Main2.pdf* is the main *InfoLink for PLC* home page. It has links to all the other documents.

## ***Search Instructions***

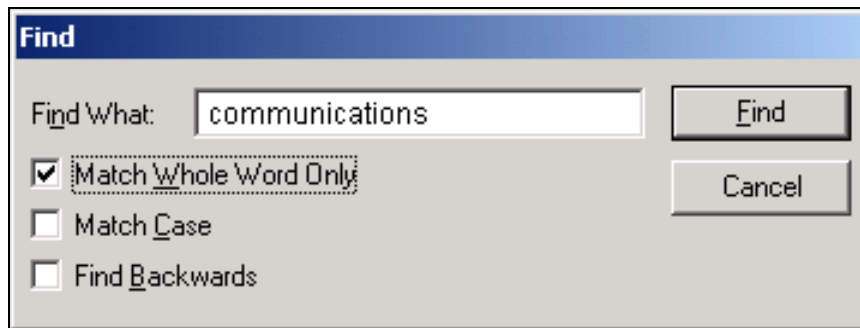
The instructions in this section describe how to search within a document or across the document collection on a CD or hard drive using the tools provided by Adobe Acrobat Reader with Search version 4.0. Later versions of the Reader may operate slightly differently.

Please refer to the Acrobat Reader Online Help instructions if you need more information.

### ***Finding text in the Current Document***



Use the Find feature (Edit > Find, or CTRL-F) to search for a text string in the currently-open PDF document.

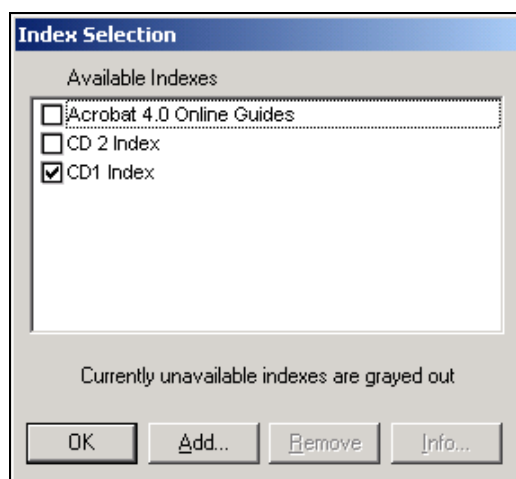


## Searching the InfoLink for PLC Library

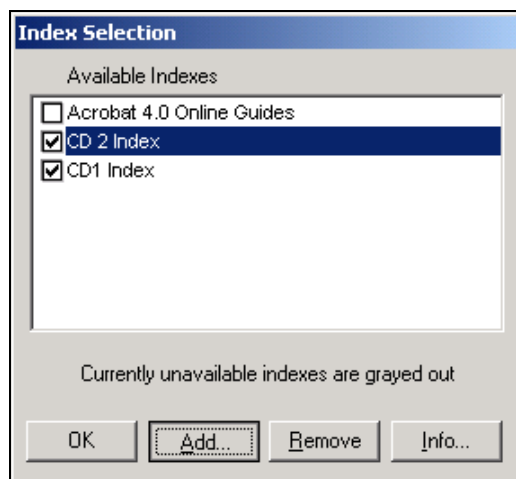
Searching the *InfoLink for PLC* library requires Adobe Acrobat with Search version 4.0 or later. Adobe Acrobat version 4.0 without Search does not provide this functionality. If you are using the *InfoLink for PLC* CDs, you can search all of the documents on the currently-installed CD. If *InfoLink for PLC* is installed on a hard drive or server, you can search all of the documents in the library.

## Adding or Removing Search Indexes

The Search feature examines documents that have been linked to attached index files. *InfoLink for PLC* has a separate index file for each CD. For example:

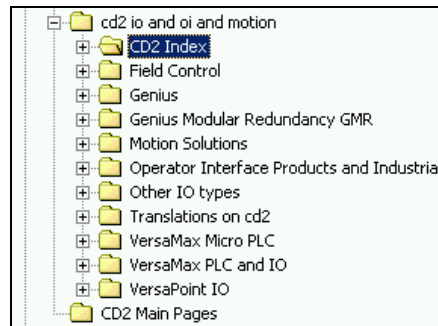


By default, each Index resides on and is attached on its own CD only. When *InfoLink for PLC* is installed on a hard drive or server, all CD indexes must be attached to be able to search the entire document collection.

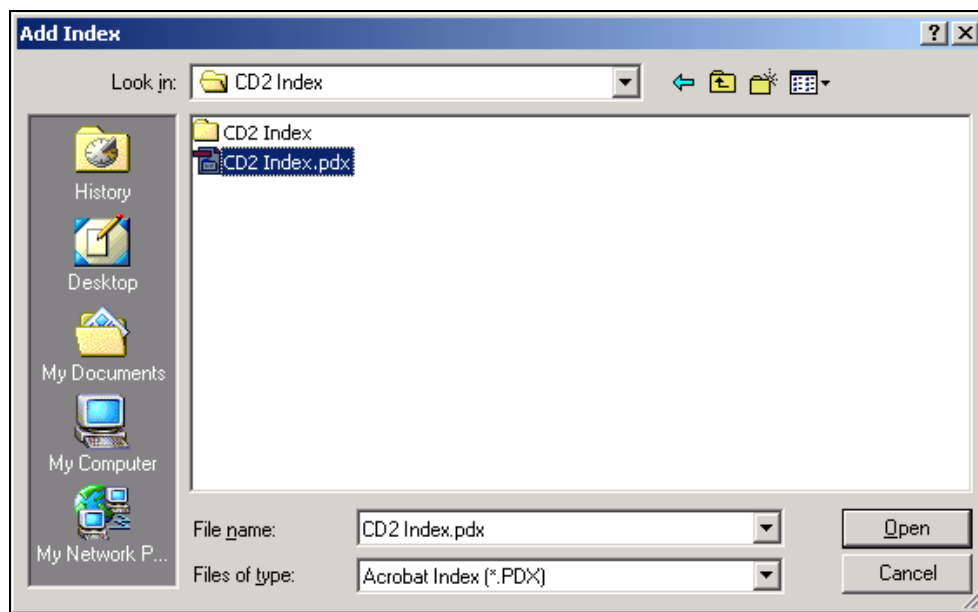


In the Search > Index Selection window, use the Add and Remove buttons to add or remove selected indexes if necessary. The Adobe Acrobat Online Guides may also be selected.

If a CD index is grayed-out, navigate to the index you want to attach. For example, for CD2, navigate to:



Select the index file and click Open.

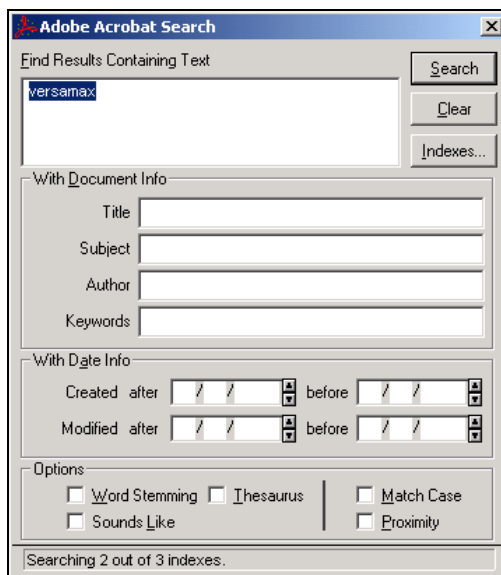


## Search Instructions

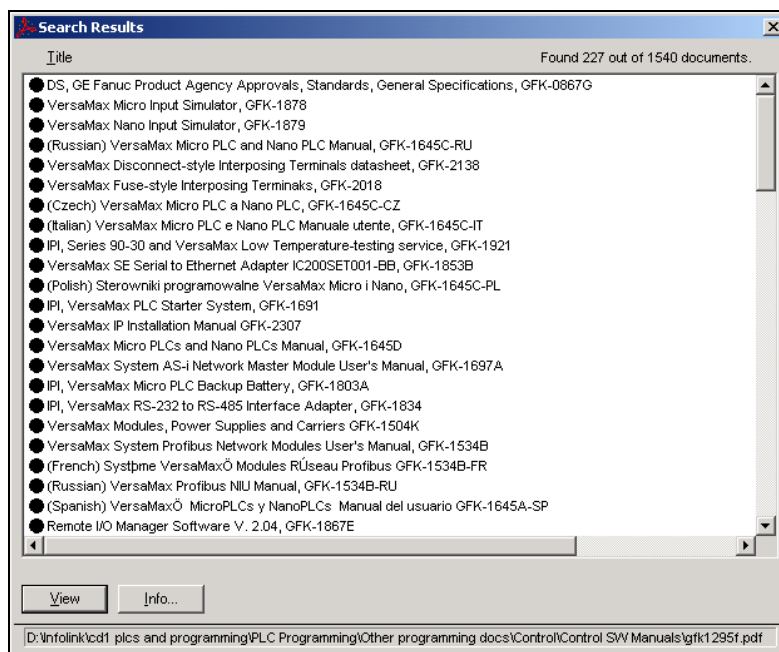


To search across the selected index(es), select Edit > Search > Query or click the Search icon in the toolbar.

To search within the document text, enter a word or term in the search window. For example, versamax.

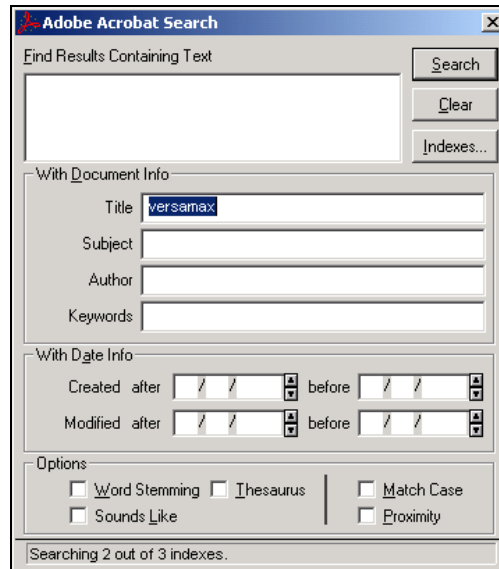


A list of Search Results quickly appears. In this example, the index lists 227 documents that mention versamax somewhere in their text:

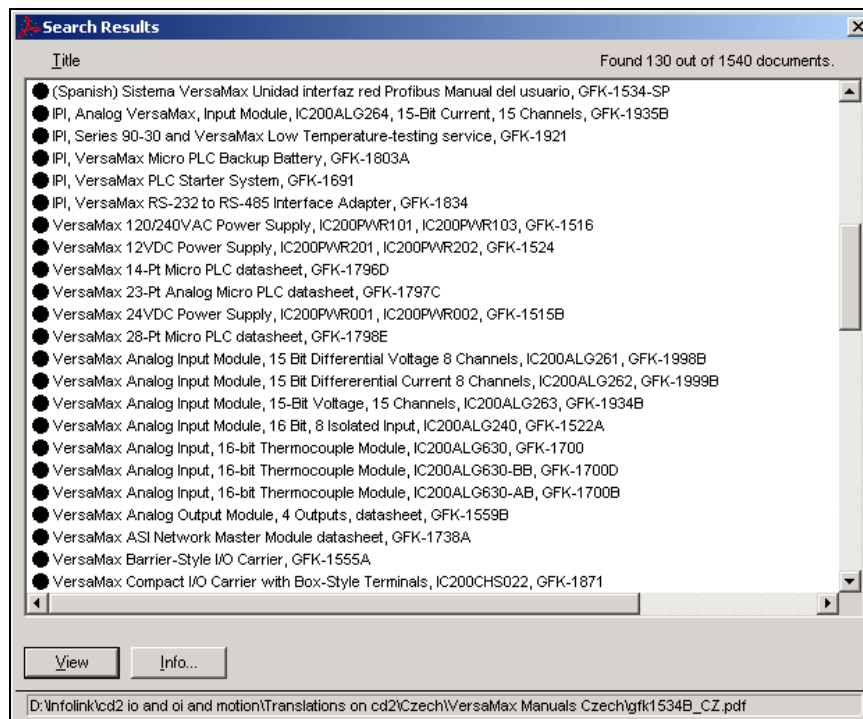


## Searching with the PDF “Document Info” Fields

You can enter a search term in the “Title” box to search in the PDF Properties fields of the documents. For example, here versamax is entered in the Title box and the search window is empty:

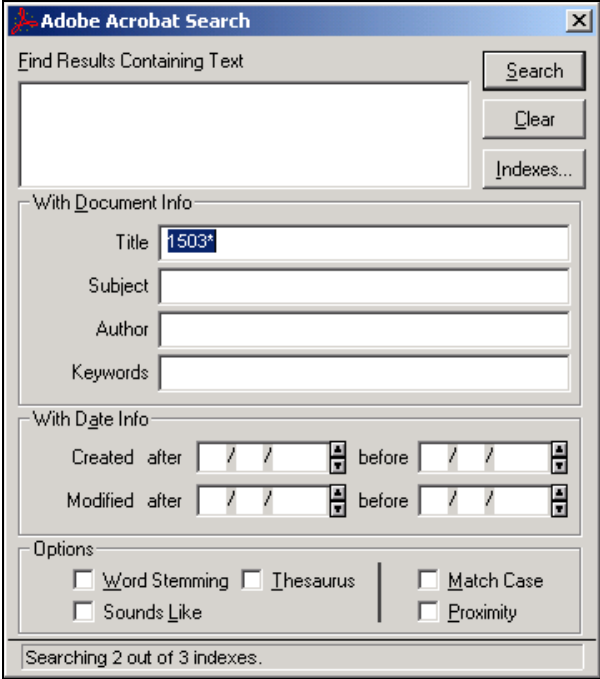


This search finds only documents with versamax in their title. It returns 130 documents:

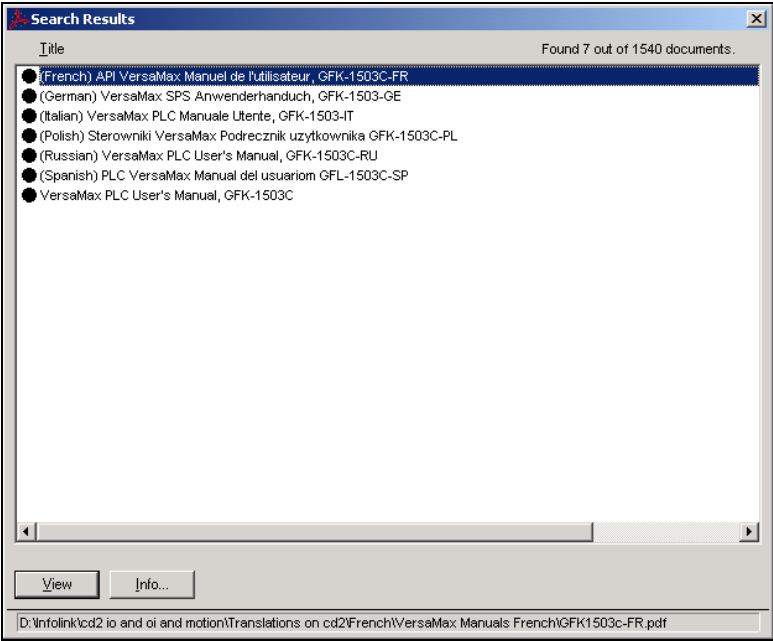




If you know a document's catalog number (most begin with the prefix GFK) you can find that document immediately by entering the number in the Search title field. If the document has a revision letter, follow the number with an asterisk (or the search won't find it):



This search returns:



If a search finds only one document, that document opens automatically. For example, you entered 1503C, the *VersaMax PLC User's Manual*, GFK-1503C, would open.